



# CAPITAL

Collection



## Quad

*The FR screen fabric that ticks all the boxes*

2500mm & 3000mm | 89 & 127mm

# Quad

The FR screen fabric that ticks all the boxes

A long time favourite for fans of Capital Collection. Quad offers ten colours in the same basket weave, each available in an openness factor of 1, 3, 5, or 10%.

By mixing *various openness factors* in one space, light levels from windows on differing sides of a room can be effectively managed without sacrificing uniformity of style.

Being fire retardant, and suitable for roller blinds up to three metres wide, Quad's position as the go-to fabric for countless residential and commercial projects is secure for years to come.



Certified fire retardancy



Choose from or combine four openness factors



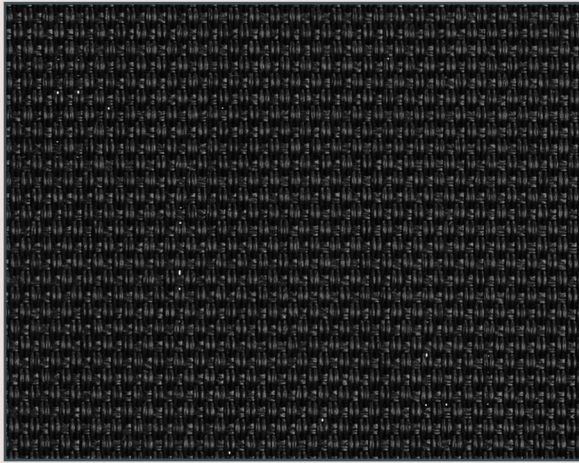
Suitable for vertical blinds



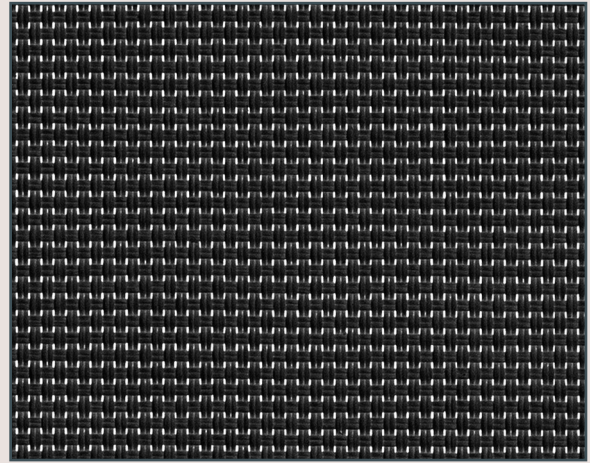
Infused with a protective antimicrobial coating



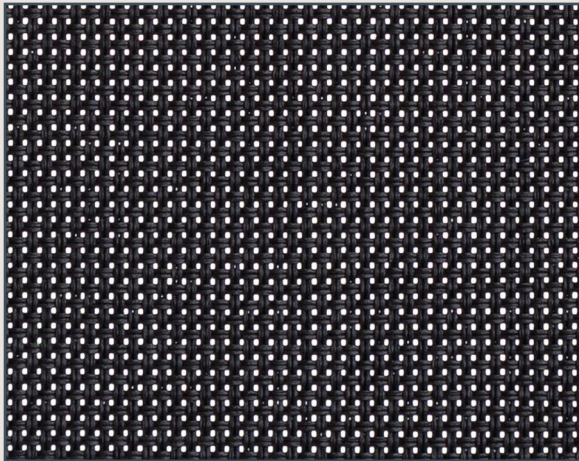




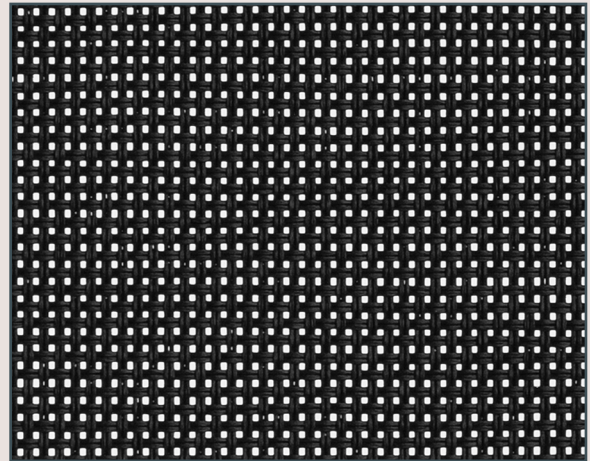
1%



3%



5%



10%

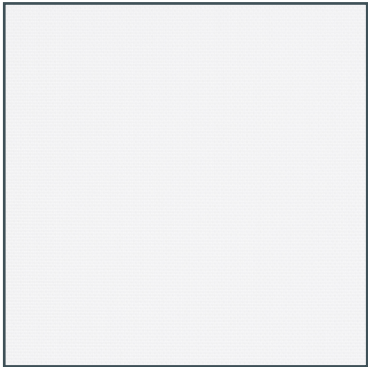
	Quad 1%	Quad 3%	Quad 5%	Quad 10%
Product	Roller & Vertical	Roller & Vertical	Roller & Vertical	Roller
Composition	70% PVC - 30% PES	70% PVC - 30% PES	70% PVC - 30% PES	70% PVC - 30% PES
Roller - roll width	2500mm & 3000mm	2500mm & 3000mm	2500mm & 3000mm	2500mm
Roller - roll length	ca. 27m	ca. 27m	ca. 27m	ca. 27m
Vertical - roll width	89mm & 127mm	89mm & 127mm	89mm & 127mm	-
Vertical - roll length	ca. 90m	ca. 90m	ca. 90m	-
Weight	497g/m <sup>2</sup>	443g/m <sup>2</sup>	423g/m <sup>2</sup>	370g/m <sup>2</sup>
Thickness	0.67mm	0.62mm	0.57mm	0.53mm
FR Classifications	BS 5867-2, TYPE B DIN 4102, CLASS B1 EN 13773, CLASS 1	BS 5867-2, TYPE B DIN 4102, CLASS B1 EN 13773, CLASS 1	BS 5867-2, TYPE B DIN 4102, CLASS B1 EN 13773, CLASS 1	BS 5867-2, TYPE B DIN 4102, CLASS B1 EN 13773, CLASS 1
Colour Fastness (ISO 105 - B02)	Grade 8	Grade 8	Grade 8	Grade 8
Cleaning	Damp cloth	Damp cloth	Damp cloth	Damp cloth
Recommended cut method	Cold Cut, Ultrasonic	Cold Cut, Ultrasonic	Cold Cut, Ultrasonic	Cold Cut, Ultrasonic
Oeko-Tex Standard 100	Yes	Yes	Yes	Yes
Suitable for moist conditions	Yes	Yes	Yes	Yes

### Technical Specifications

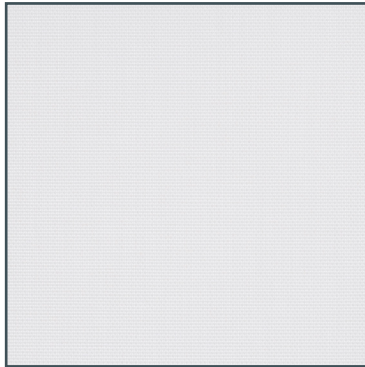
Colour	Thermal							Visual		
	Ts %	RS %	As %	GTOT INT GLAZING C		GTOT INT GLAZING D		Tv %	Rv %	Av %
				GTOT	CLASS	GTOT	CLASS			
<b>Quad 1%</b>										
Ivory	15	70	15	0.34	2	0.25	2	11	80	9
Bright White	13	72	15	0.34	2	0.24	2	9	82	9
Beige	11	67	22	0.35	1	0.25	2	7	75	18
Soft Grey	8	55	37	0.39	1	0.26	2	5	62	33
Iron Grey	0	10	90	0.53	0	0.3	2	0	11	89
Ebony	0	4	96	0.55	0	0.31	2	0	4	96
Steel	3	33	64	0.46	1	0.28	2	1	34	65
Sand	14	33	53	0.46	1	0.28	2	10	34	56
Bronze	0	6	94	0.55	0	0.3	2	0	6	94
Pearl Grey	9	46	45	0.42	1	0.27	2	5	50	45
<b>Quad 3%</b>										
Ivory	15	72	13	0.34	2	0.24	2	12	82	6
Bright White	16	70	14	0.34	2	0.25	2	12	80	8
Beige	12	63	25	0.37	1	0.25	2	8	69	23
Soft Grey	10	51	39	0.4	1	0.26	2	7	57	36
Iron Grey	2	12	86	0.53	0	0.3	2	2	13	85
Ebony	2	5	93	0.55	0	0.3	2	2	4	94
Steel	5	33	62	0.46	1	0.28	2	3	34	63
Sand	16	51	33	0.4	1	0.26	2	12	56	32
Bronze	2	7	91	0.54	0	0.3	2	2	6	92
Pearl Grey	11	43	46	0.43	1	0.27	2	8	47	45
<b>Quad 5%</b>										
Ivory	18	70	12	0.34	2	0.25	2	15	79	6
Bright White	17	68	15	0.35	1	0.25	2	13	78	9
Beige	22	57	21	0.39	1	0.26	2	19	65	16
Soft Grey	12	49	39	0.41	1	0.27	2	9	54	37
Iron Grey	6	15	80	0.52	0	0.3	2	6	15	80
Ebony	5	4	91	0.56	0	0.31	2	5	4	91
Steel	9	33	58	0.46	1	0.28	2	7	33	60
Sand	20	52	28	0.4	1	0.26	2	16	58	26
Bronze	3	7	90	0.55	0	0.3	2	3	7	90
Pearl Grey	13	41	46	0.44	1	0.27	2	10	44	46
<b>Quad 10%</b>										
Ivory	24	63	13	0.37	1	0.25	2	21	72	7
Bright White	30	57	13	0.39	1	0.26	2	27	66	7
Beige	23	57	20	0.39	1	0.26	2	20	64	16
Soft Grey	17	46	37	0.42	1	0.27	2	14	51	35
Iron Grey	12	14	74	0.52	0	0.3	2	12	15	73
Ebony	11	4	85	0.56	0	0.31	2	11	4	85
Steel	15	30	55	0.47	1	0.28	2	12	32	56
Sand	23	50	27	0.41	1	0.27	2	20	56	24
Bronze	10	7	83	0.55	0	0.3	2	10	6	84
Pearl Grey	19	37	44	0.45	1	0.28	2	16	41	43

<b>Ts</b> = Solar Transmittance	<b>Rs</b> = Solar Reflectance	<b>As</b> = Solar Absorbance	<b>Tv</b> = Visual Transmittance	<b>Rv</b> = Visual Reflectance	<b>Av</b> = Visual Absorbance
<b>Gtot</b> = Total solar energy reflectance		<b>Glazing C</b> = Double glazing as described in EN 14501:2021		<b>Glazing D</b> = Solar control glazing as described in EN 14501:2021	

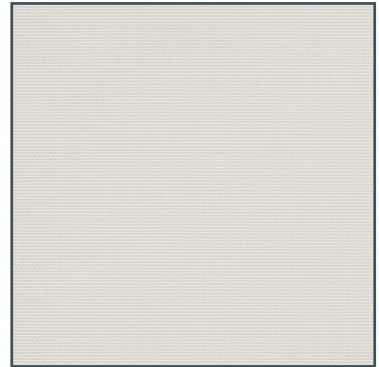




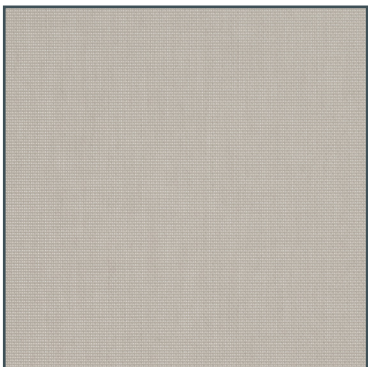
Bright White 3%



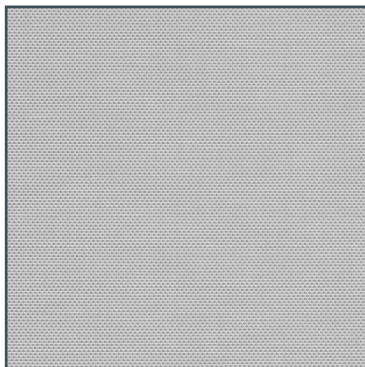
Ivory 3%



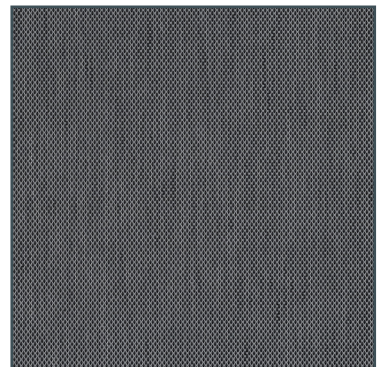
Beige 3%



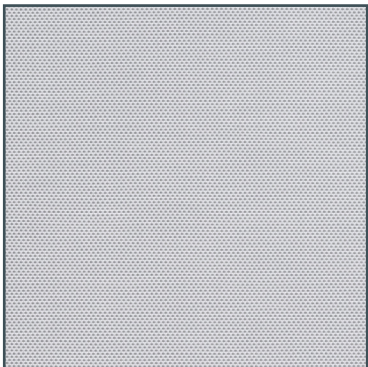
Sand 3%



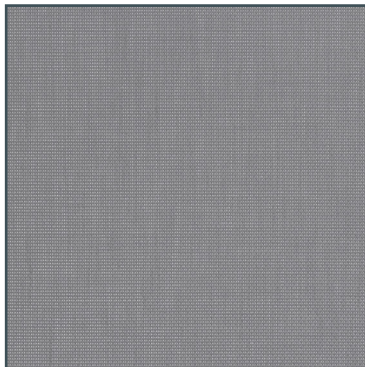
Pearl Grey 3%



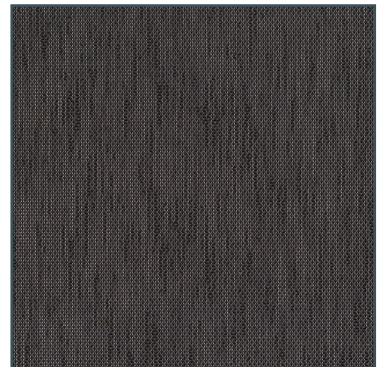
Iron Grey 3%



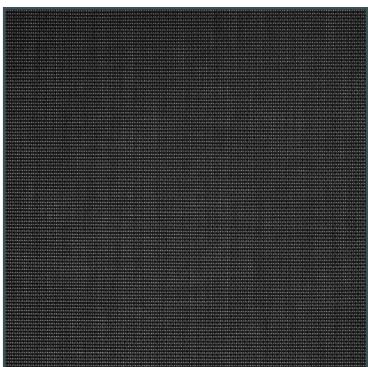
Soft Grey 3%



Steel 3%



Bronze 3%



Ebony 3%